

# TRADITIONS

AT WESTRIDGE



## CARLISLE II

This exciting new “**master on the main**” plan features a breathtaking **Renaissance Revival facade**. Inside, you’ll find all of the features that you would expect from SummerPlace Homes. Dramatic volume spaces, a **gourmet island kitchen with breakfast bar**, a private guest suite with a complete private bath, **a cozy master retreat with a three-sided fireplace**, and, of course, a spacious **three car garage**. The second level features, three additional bedrooms, a **Jack and Jill bath**, and a **huge bonus room**.



### EXPLORE THE POSSIBILITIES

In the spirit of continuous improvement, we reserve the right to make changes to plans, specifications, and pricing without notice. Variations in interior and exterior configurations may occur because of normal design criteria and changing building codes. All square footages and room dimensions are approximate only. All illustrations, floor plans, exhibits, site plans, and maps are artist's conceptions only and are not intended to be exact depictions of actual site conditions.



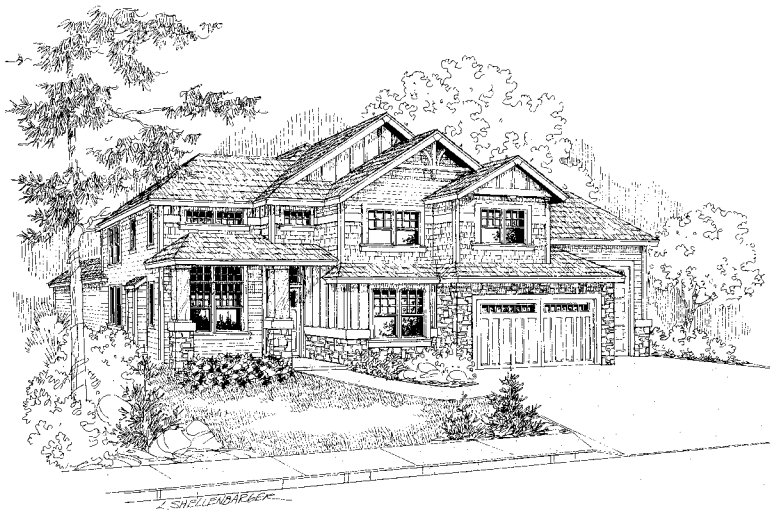
# TRADITIONS

---

## AT WESTRIDGE



CRAFTSMAN



NORTHWEST TRADITIONAL



RENAISSANCE REVIVAL

  
**SUMMERPLACE  
HOMES, INC.**  
Building a Climate of Excellence



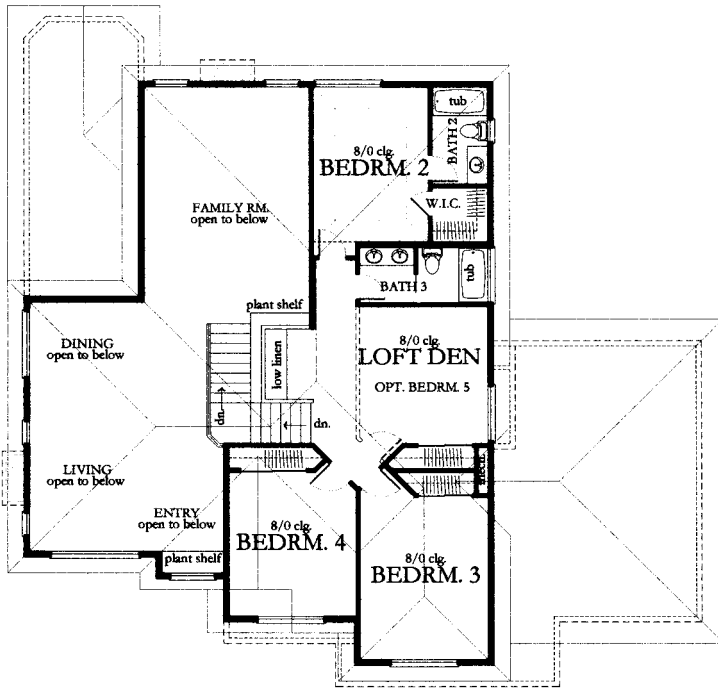
### EXPLORE THE POSSIBILITIES

In the spirit of continuous improvement, we reserve the right to make changes to plans, specifications, and pricing without notice. Variations in interior and exterior configurations may occur because of normal design criteria and changing building codes. All square footages and room dimensions are approximate only. All illustrations, floor plans, exhibits, site plans, and maps are artist's conceptions only and are not intended to be exact depictions of actual site conditions.

# TRADITIONS

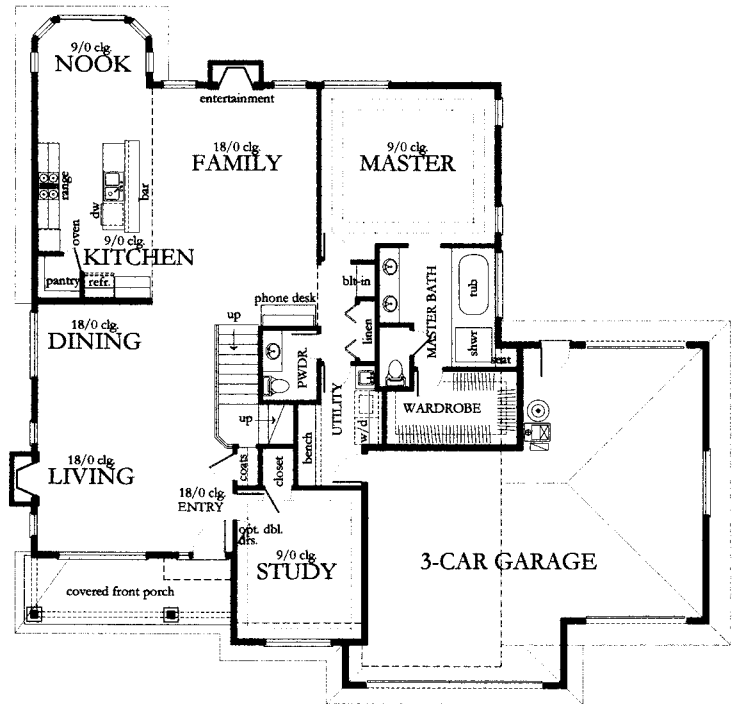
AT WESTRIDGE

## MASON II



UPPER LEVEL

MAIN LEVEL



Main Floor	1952 Sq. Ft.
Upper Floor	1055 Sq. Ft.
<b>Total</b>	<b>3007 Sq. Ft.</b>



**EXPLORE THE POSSIBILITIES**

All square footages are approximate. Plans, prices and specifications are subject to change without notice. This plan is copyrighted and may not be reproduced without permission.

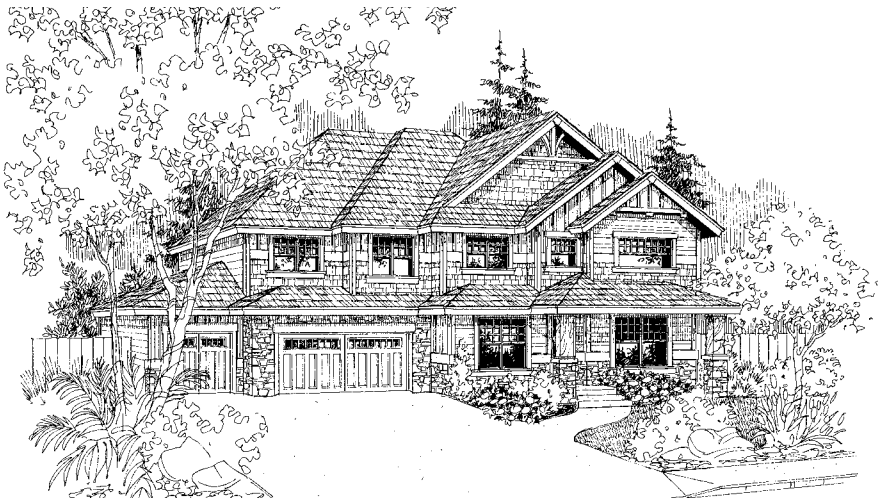
# TRADITIONS

---

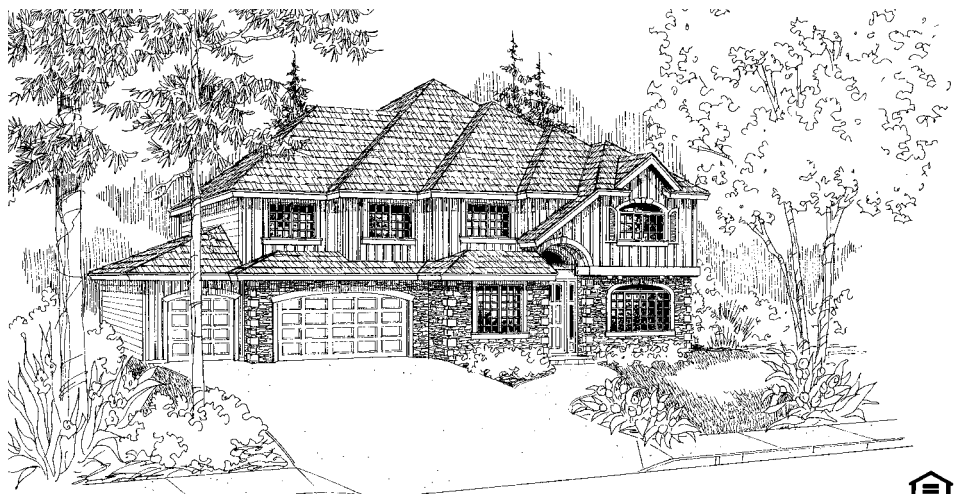
## AT WESTRIDGE



CRAFTSMAN



NORTHWEST TRADITIONAL



RENAISSANCE REVIVAL

  
**SUMMERPLACE  
HOMES, INC.**  
Building a Climate of Excellence



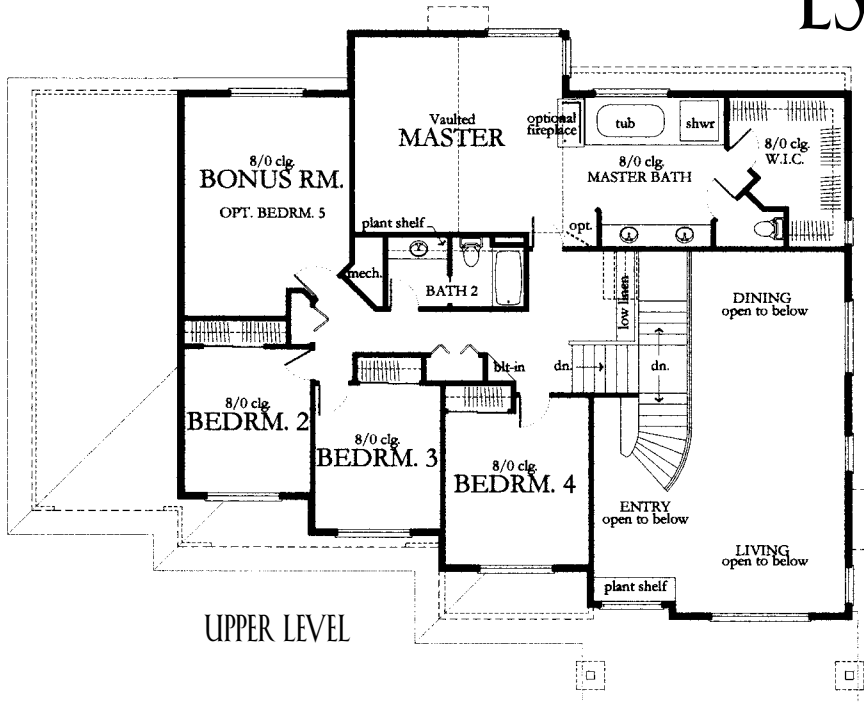
### EXPLORE THE POSSIBILITIES

In the spirit of continuous improvement, we reserve the right to make changes to plans, specifications, and pricing without notice. Variations in interior and exterior configurations may occur because of normal design criteria and changing building codes. All square footages and room dimensions are approximate only. All illustrations, floor plans, exhibits, site plans, and maps are artist's conceptions only and are not intended to be exact depictions of actual site conditions.

# TRADITIONS

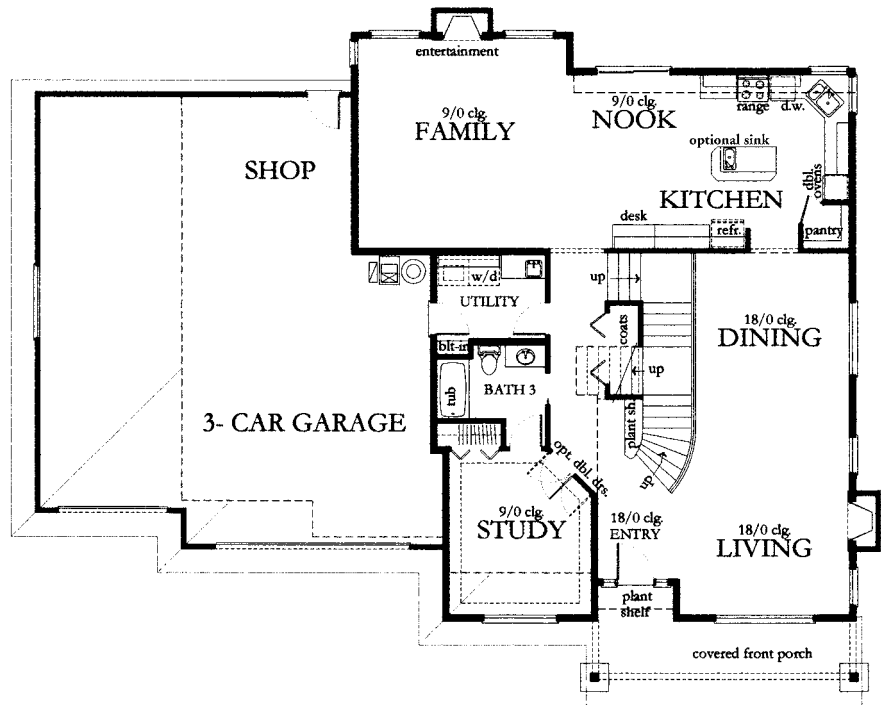
AT WESTRIDGE

## ESPERANCE II



UPPER LEVEL

MAIN LEVEL



Main Floor	1733 Sq. Ft.
Upper Floor	1674 Sq. Ft.
<b>Total</b>	<b>3407 Sq. Ft.</b>



**EXPLORE THE POSSIBILITIES**

All square footages are approximate. Plans, prices and specifications are subject to change without notice. This plan is copyrighted and may not be reproduced without permission.

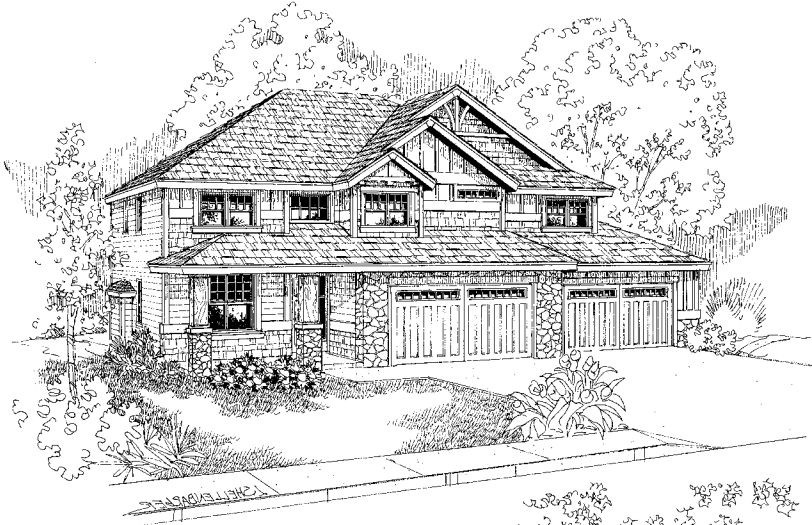
# TRADITIONS

---

## AT WESTRIDGE



CRAFTSMAN



NORTHWEST TRADITIONAL



RENAISSANCE REVIVAL

  
**SUMMERPLACE  
HOMES, INC.**  
Building a Climate of Excellence



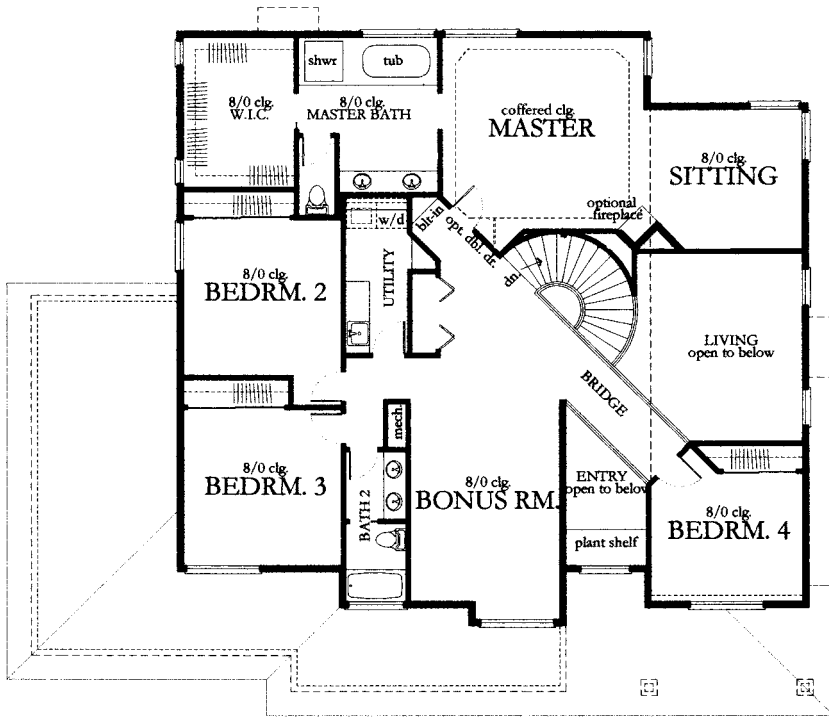
### EXPLORE THE POSSIBILITIES

In the spirit of continuous improvement, we reserve the right to make changes to plans, specifications, and pricing without notice. Variations in interior and exterior configurations may occur because of normal design criteria and changing building codes. All square footages and room dimensions are approximate only. All illustrations, floor plans, exhibits, site plans, and maps are artist's conceptions only and are not intended to be exact depictions of actual site conditions.

# TRADITIONS

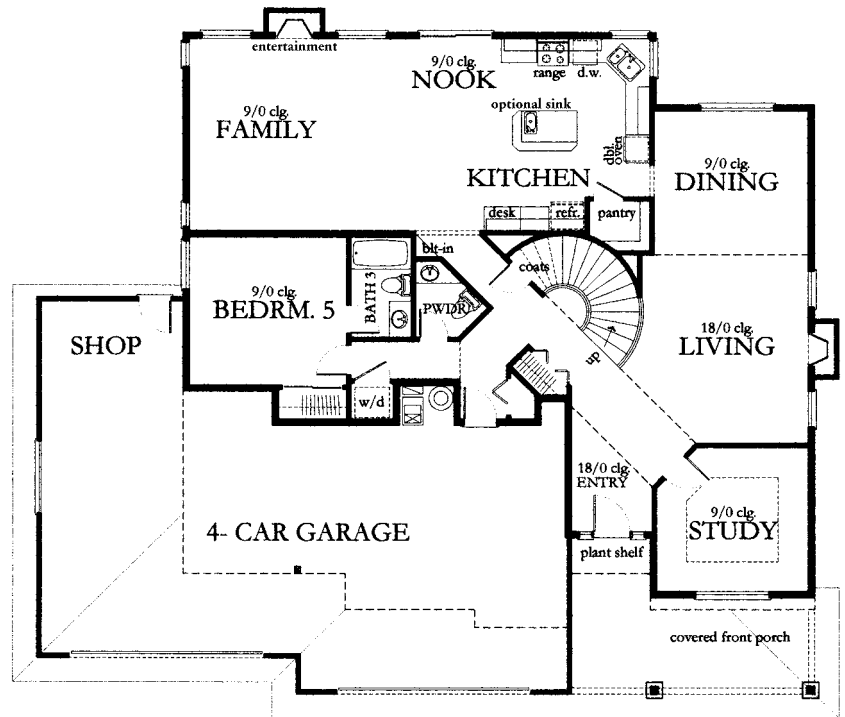
AT WESTRIDGE

## AVALON II



UPPER LEVEL

MAIN LEVEL



Main Floor	1840 Sq. Ft.
Upper Floor	2020 Sq. Ft.
<b>Total</b>	<b>3860 Sq. Ft.</b>



EXPLORE THE POSSIBILITIES

All square footages are approximate. Plans, prices and specifications are subject to change without notice. This plan is copyrighted and may not be reproduced without permission.

# TRADITIONS

AT WESTRIDGE



CRAFTSMAN

## BRYSON II

This elegant one level home redefines the phrase "**open floor plan.**" The central living area of this beautiful home features formal and informal dining areas, a **gourmet island kitchen**, and a **unique flex space** that serves as formal living, a home office, home library or theatre room. This living space also separates the sleeping areas providing **privacy for the comfortable master suite.** On the other end of this expansive home, you'll find two additional bedrooms that share a **Jack and Jill bath**, and a **guest suite with it's own private bath.** A **three car garage** completes this outstanding ranch plan.



NORTHWEST TRADITIONAL

**SUMMERPLACE  
HOMES, INC.**  
Building a Climate of Excellence



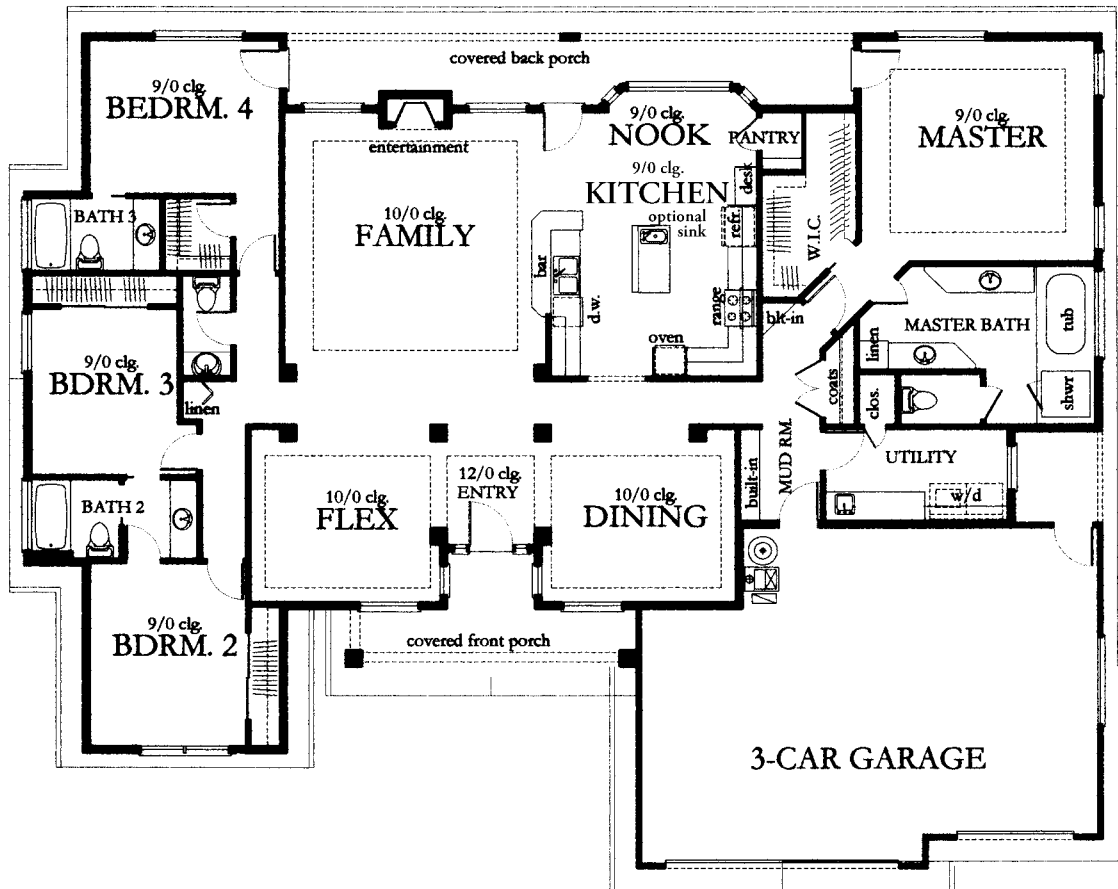
### EXPLORE THE POSSIBILITIES

In the spirit of continuous improvement, we reserve the right to make changes to plans, specifications, and pricing without notice. Variations in interior and exterior configurations may occur because of normal design criteria and changing building codes. All square footages and room dimensions are approximate only. All illustrations, floor plans, exhibits, site plans, and maps are artist's conceptions only and are not intended to be exact depictions of actual site conditions.

# TRADITIONS

AT WESTRIDGE

## BRYSON II



Basic square footage 2666



**EXPLORE THE POSSIBILITIES**

All square footages are approximate. Plans, prices and specifications are subject to change without notice. This plan is copyrighted and may not be reproduced without permission.