

# Larkspur

## Columbian

This **beautiful new design** has all the features that today's Home Buyers are looking for, wrapped up in a choice of **two striking exterior facades**. The main floor features a **three car garage**, as well as a **flexible and functional space** that can serve as a **home office, guest room**, or even an **in-law suite**. The optional full bath adds to the **main level versatility**. The mid level layout features an **open and airy great room** concept with **oversized windows, 10' ceilings** and a **soaring stone fireplace**. The **gourmet island kitchen** is sure to be the star of the show with its **top end appliances, customizable island** and **huge walk in pantry**. You'll enjoy **lots of natural light in the dining room** provided by a **12' wide patio door** that leads you to the **covered deck** where you'll enjoy those al fresco meals. The **private primary suite** features a **generously sized walk in tile shower** and a **free standing soaking tub** for that **spa like experience**. The upper floor features an **oversized bonus room**, two additional bedrooms and a **convenient second laundry room**.



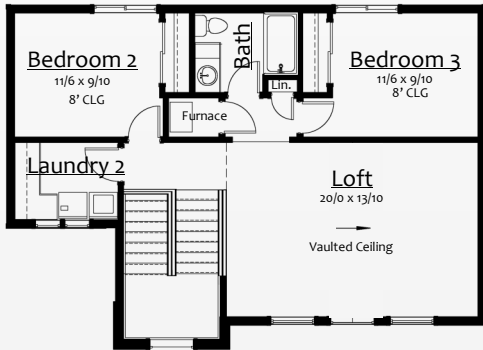
Building a Climate of Excellence

WA LIC# SUMMEH1050N5

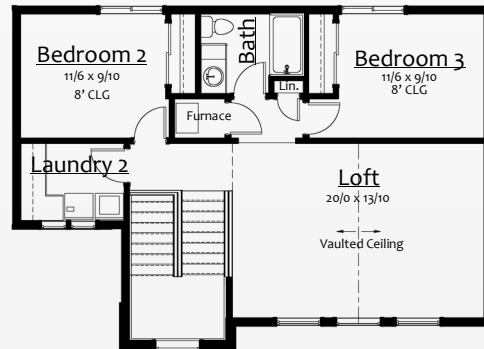


In the spirit of continuous improvement, we reserve the right to make changes to plans, specifications and pricing without notice. Variations in interior and exterior configurations may occur because of normal design criteria and changing building codes. All square footages and room dimensions are approximate only. All illustrations, floor plans and maps are artist's conceptions only and are not intended to be exact depictions of actual site conditions.

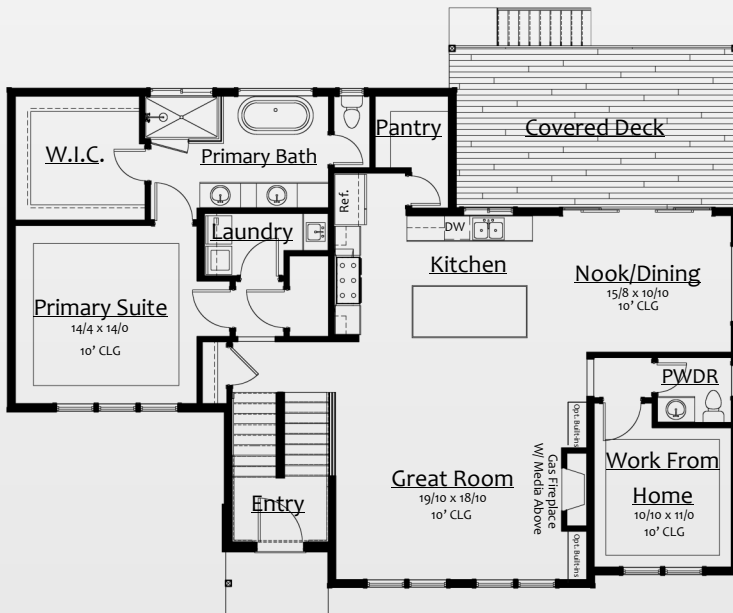
# Larkspur



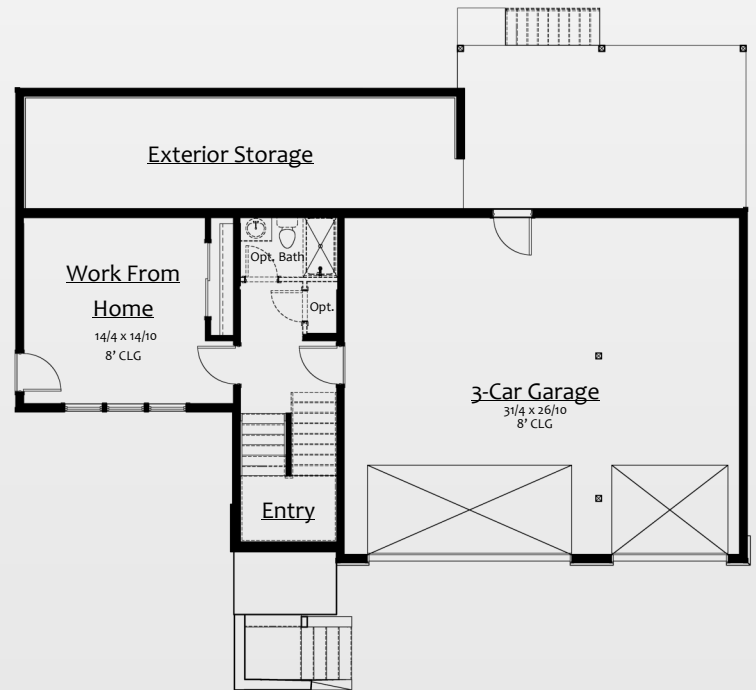
**Modern Upper Floor Plan**



**NW Traditional Upper Floor Plan**



**Main Floor Plan**



**Lower Level Floor Plan**

3,012 S.F.