



# Hockinson Hollow

## SMARTSTYLE

This **traditional two story plan** features the very best in **today's hot new design elements**. The main floor **great room concept** layout has **wide open spaces**, a **gourmet island kitchen**, and a **huge dining area** that connects to the **covered patio for those al fresco meals**. The **oversized three car garage** also features a **functional shop space**. As you travel the **open staircase** to the second floor, you'll find a **very private primary suite** with an option to add a soaking tub in the bath. A **generously sized bonus room**, and three additional bedrooms provide space for all. A **convenient second floor laundry** completes this exciting new plan.

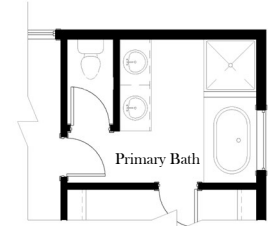


In the spirit of continuous improvement, we reserve the right to make changes to plans, specifications and pricing without notice. Variations in interior and exterior configurations may occur because of normal design criteria and changing building codes. All square footages and room dimensions are approximate only. All illustrations, floor plans and maps are artist's conceptions only and are not intended to be exact depictions of actual site conditions.

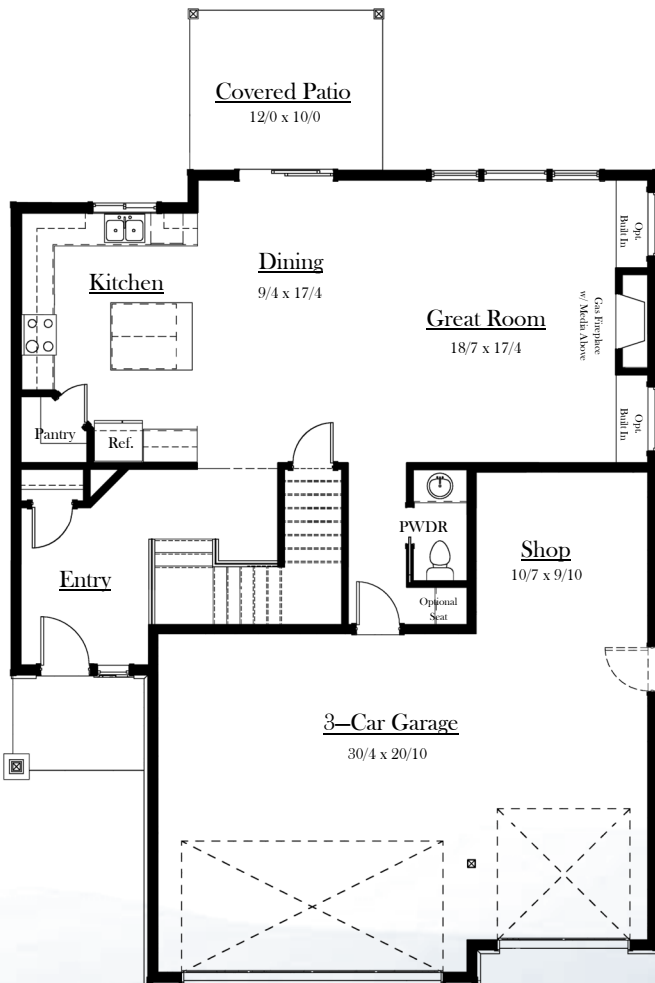




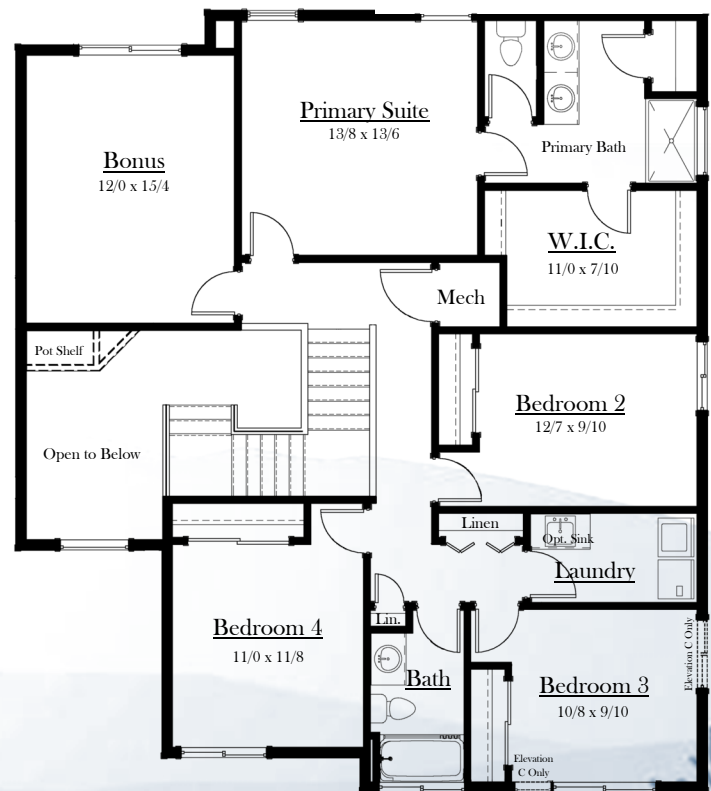
# Hockinson Hollow



**Opt. Tub**



**Main Floor Plan**



**Upper Floor Plan**

**2,441 S.F.**

In the spirit of continuous improvement, we reserve the right to make changes to plans, specifications and pricing without notice. Variations in interior and exterior configurations may occur because of normal design criteria and changing building codes. All square footages and room dimensions are approximate only. All illustrations, floor plans and maps are artist's conceptions only and are not intended to be exact depictions of actual site conditions.

