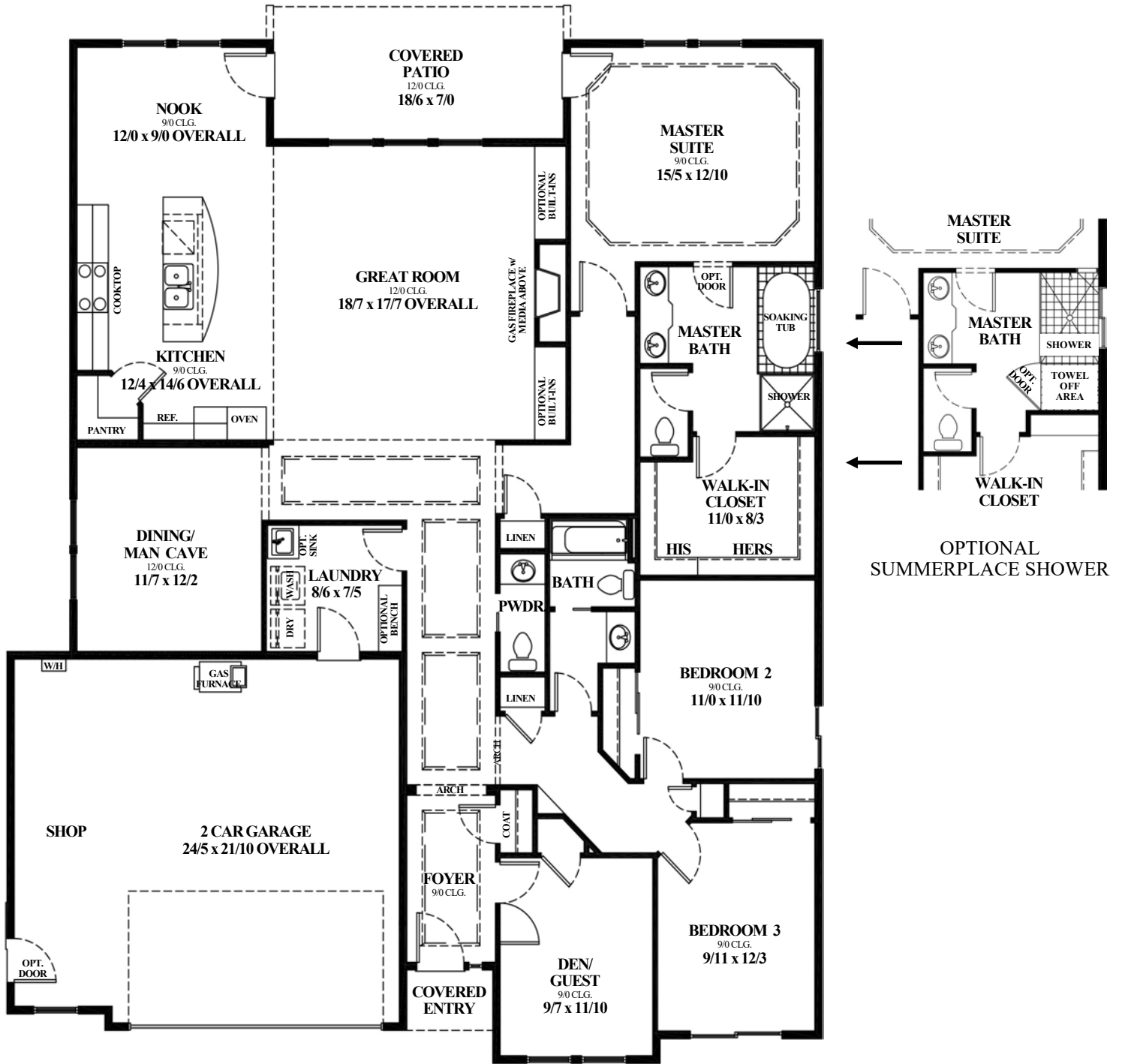


# PLEASANT HOLLOW

## CLASSIC COLLECTION



MAIN LEVEL

## MADISON

Base Square Footage = 2300

# PLEASANT HOLLOW CLASSIC COLLECTION

This *open, easy living* one level plan has all the features that the discriminating home buyer is looking for. The *oversized great room with 12' ceilings* is the centerpiece of this functional layout.



CRAFTSMAN



NORTHWEST TRADITIONAL

A gourmet island kitchen, two dining areas, and a private master suite with patio access also add to this plan's appeal. For flexibility, this plan offers *two spacious bedrooms*, and a *separate den*. A spacious 2 car garage with a shop add to this plan's functionality.



## MADISON



In the spirit of continuous improvement, we reserve the right to make changes to plans, specifications and pricing without notice. Variations in interior and exterior configurations may occur because of normal design criteria and changing building codes. All square footages and room dimensions are approximate only. All illustrations, floor plans and maps are artist's conceptions only and are not intended to be exact depictions of actual site conditions.