



HIGHLAND TERRACE

URBANSTYLE

Featuring an **updated modern layout**, and a choice of **three beautiful exteriors**, this **new traditional two story plan** has all the bells and whistles that today's buyers are looking for. On the main level you'll enjoy creating delicious family meals in the **gourmet island kitchen** complete with a **walk in pantry**. There is also a **main level den** that can serve as a **work from home space** or a **guest room**. The second level boasts a very **luxurious and private primary suit** featuring a tile shower and an option for a soaking tub. The **spacious bonus room** offers additional versatility, and the convenience of the **second floor laundry room** is sure to please.



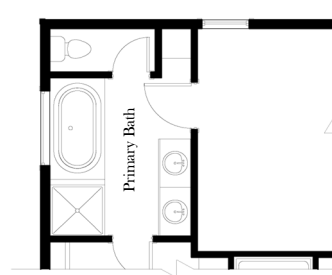
In the spirit of continuous improvement, we reserve the right to make changes to plans, specifications and pricing without notice. Variations in interior and exterior configurations may occur because of normal design criteria and changing building codes. All square footages and room dimensions are approximate only. All illustrations, floor plans and maps are artist's conceptions only and are not intended to be exact depictions of actual site conditions.



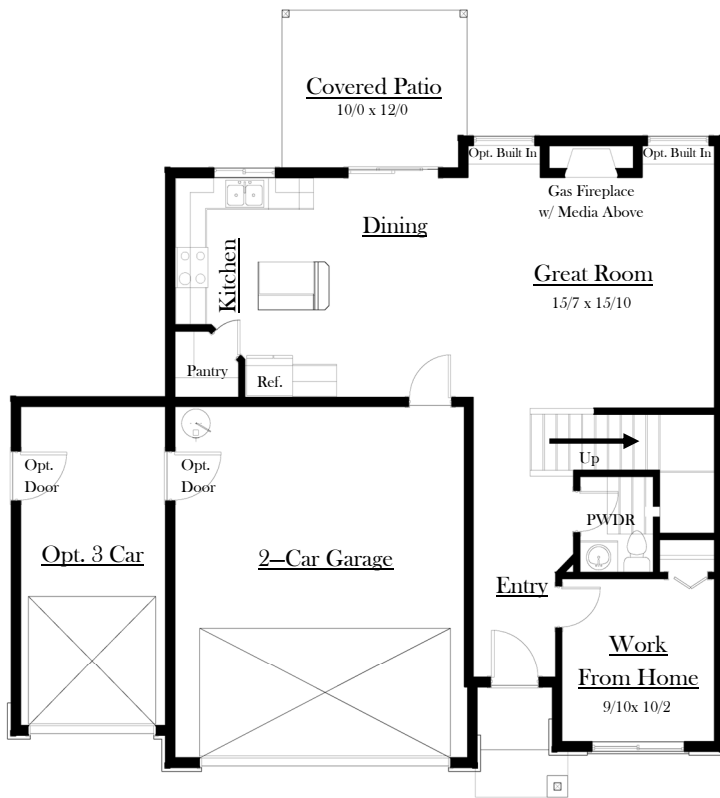
WA. LIC.# SUMMEH1050N5



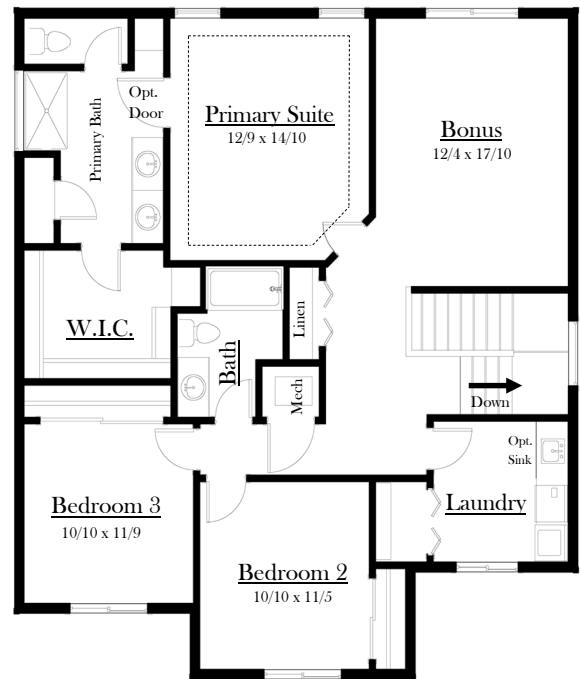
HIGHLAND TERRACE



Opt. Tub



Main Level



Second Level

2,211 S.F.

In the spirit of continuous improvement, we reserve the right to make changes to plans, specifications and pricing without notice. Variations in interior and exterior configurations may occur because of normal design criteria and changing building codes. All square footages and room dimensions are approximate only. All illustrations, floor plans and maps are artist's conceptions only and are not intended to be exact depictions of actual site conditions.



WA. LIC.# SUMMEH1050N5