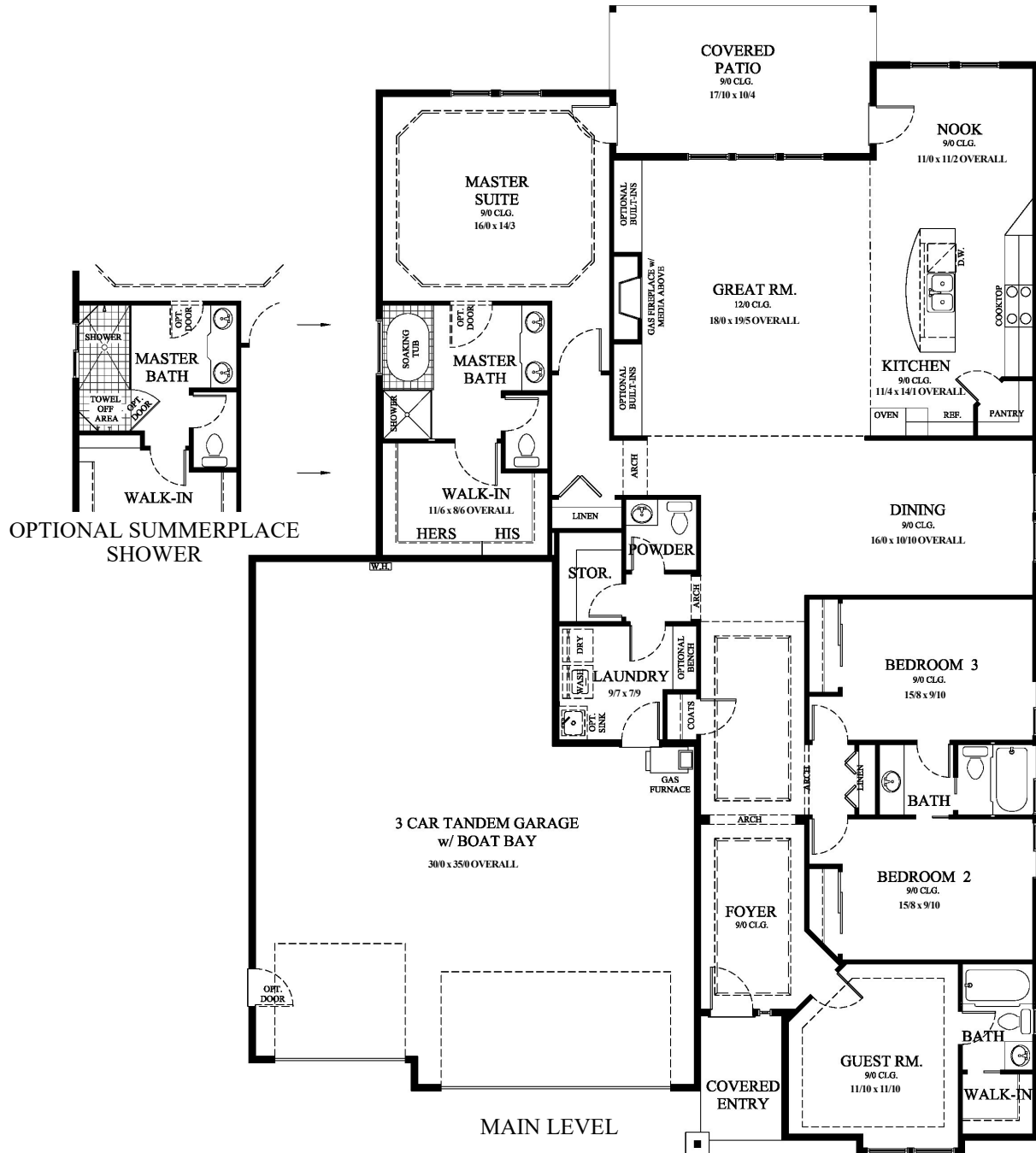


Taverner Ridge

CLASSIC COLLECTION



STERLING

Base Square Footage = 2603

**SUMMERPLACE
HOMES, INC.**

Building a Climate of Excellence
WA. LIC.# SUMMEH1050N5

All square footages and room sizes are approximate. Plans, prices and specifications are subject to change without notice. This plan is copy-righted and may not be reproduced without permission. Actual patio position may vary based on site conditions.

Taverner Ridge

CLASSIC COLLECTION

Wide open, one level comfort is what this exciting plan is all about. Classic exterior styling invites you into this functional four bedroom design including a full guest suite. Two dining areas, an open island kitchen, and a huge great room with 12' ceilings compliment the main living area.



CRAFTSMAN



NORTHWEST TRADITIONAL

The spacious, very private master suite features patio access. A conveniently located laundry room, generous linen space and a roomy three car garage with an optional boat bay complete this beautiful design.



STERLING



In the spirit of continuous improvement, we reserve the right to make changes to plans, specifications and pricing without notice. Variations in interior and exterior configurations may occur because of normal design criteria and changing building codes. All square footages and room dimensions are approximate only. All illustrations, floor plans and maps are artist's conceptions only and are not intended to be exact depictions of actual site conditions.