



HIGHLAND TERRACE

FAMILYSTYLE

As the name suggests, this *exciting new plan* is perfect for *today's growing family*. On the main level, the *oversized great room* is perfect for those *big family gatherings*. The *gourmet island kitchen* featuring a *walk in pantry* is *perfectly connected to everything*, including the *covered patio*. You'll enjoy having the *fully appointed primary suite located on the main floor* as well as the *functional den/work from home space*. There is also an option for a *three car garage*. The second floor features an *open roomy bonus room* and two additional bedrooms.



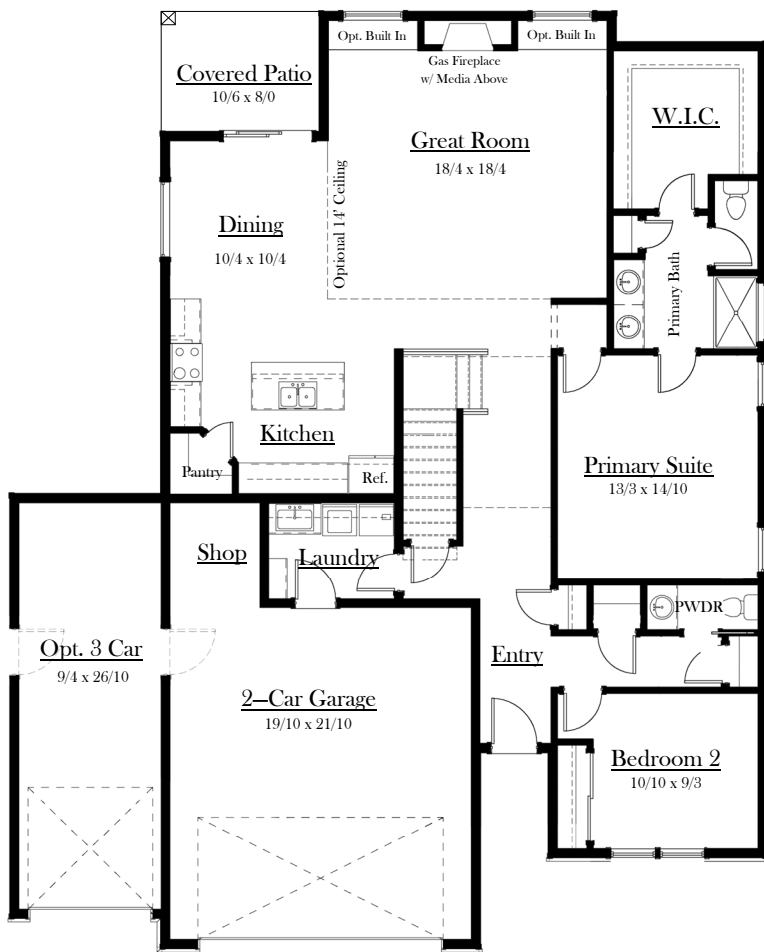
In the spirit of continuous improvement, we reserve the right to make changes to plans, specifications and pricing without notice. Variations in interior and exterior configurations may occur because of normal design criteria and changing building codes. All square footages and room dimensions are approximate only. All illustrations, floor plans and maps are artist's conceptions only and are not intended to be exact depictions of actual site conditions.



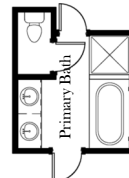
WA. LIC.# SUMMEH1050N5



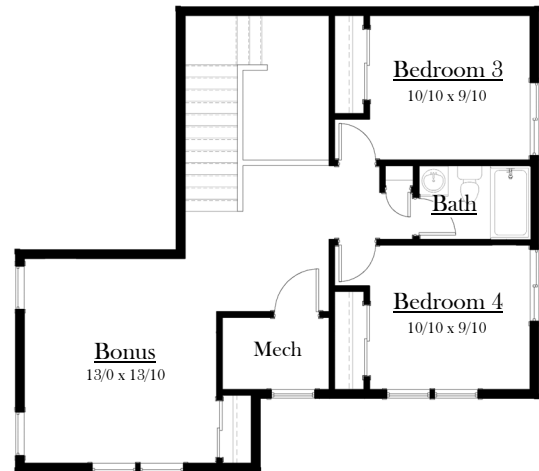
HIGHLAND TERRACE



Main Floor Plan



Opt. Tub



Upper Floor Plan

2,431 S.F.

In the spirit of continuous improvement, we reserve the right to make changes to plans, specifications and pricing without notice. Variations in interior and exterior configurations may occur because of normal design criteria and changing building codes. All square footages and room dimensions are approximate only. All illustrations, floor plans and maps are artist's conceptions only and are not intended to be exact depictions of actual site conditions.



WA. LIC.# SUMMEH1050N5