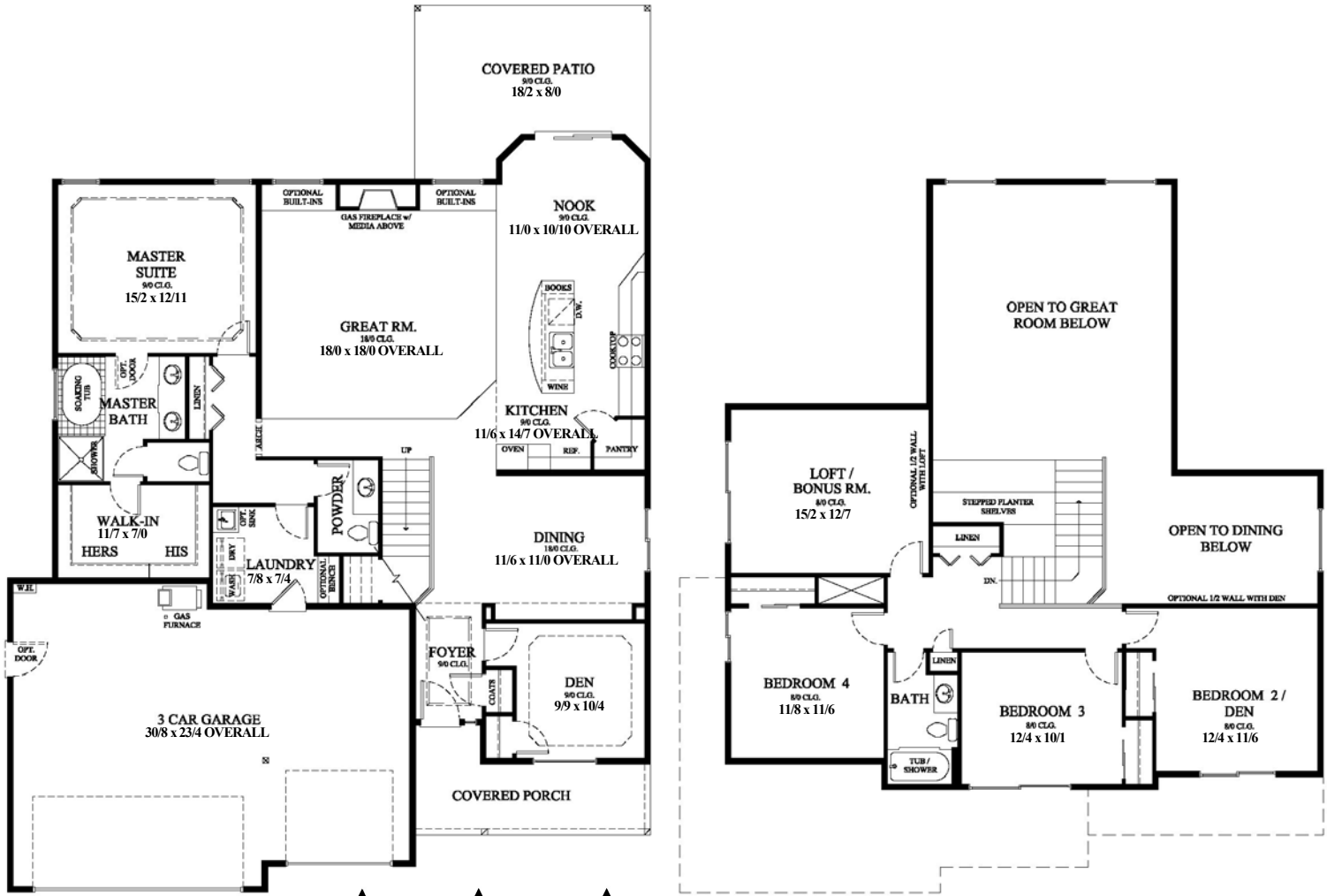


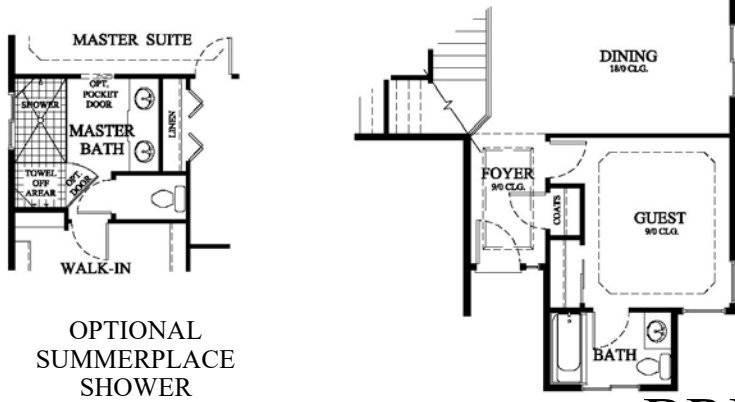
PLEASANT HOLLOW

CLASSIC COLLECTION



MAIN LEVEL

UPPER LEVEL



BRIGHTON

Base Square Footage = 2698

PLEASANT HOLLOW

CLASSIC COLLECTION

Hot off the drawing board this exciting design offers *fresh improvements* to one of our most popular *master on the main* layouts. On the main level you will find all of the features that you'd expect, including a *spacious island kitchen*, *two dining areas* along with the addition of a *huge two story great room*.



CRAFTSMAN

A large private master suite and an optional full guest bath compliment the plan's functionality. *An oversized three car garage* complete the lower level.



NORTHWEST TRADITIONAL

Above you'll find three additional bedrooms and a *huge bonus room* with *multiple lofting options* for that wide open feel.



RENAISSANCE REVIVAL

BRIGHTON



In the spirit of continuous improvement, we reserve the right to make changes to plans, specifications and pricing without notice. Variations in interior and exterior configurations may occur because of normal design criteria and changing building codes. All square footages and room dimensions are approximate only. All illustrations, floor plans and maps are artist's conceptions only and are not intended to be exact depictions of actual site conditions.