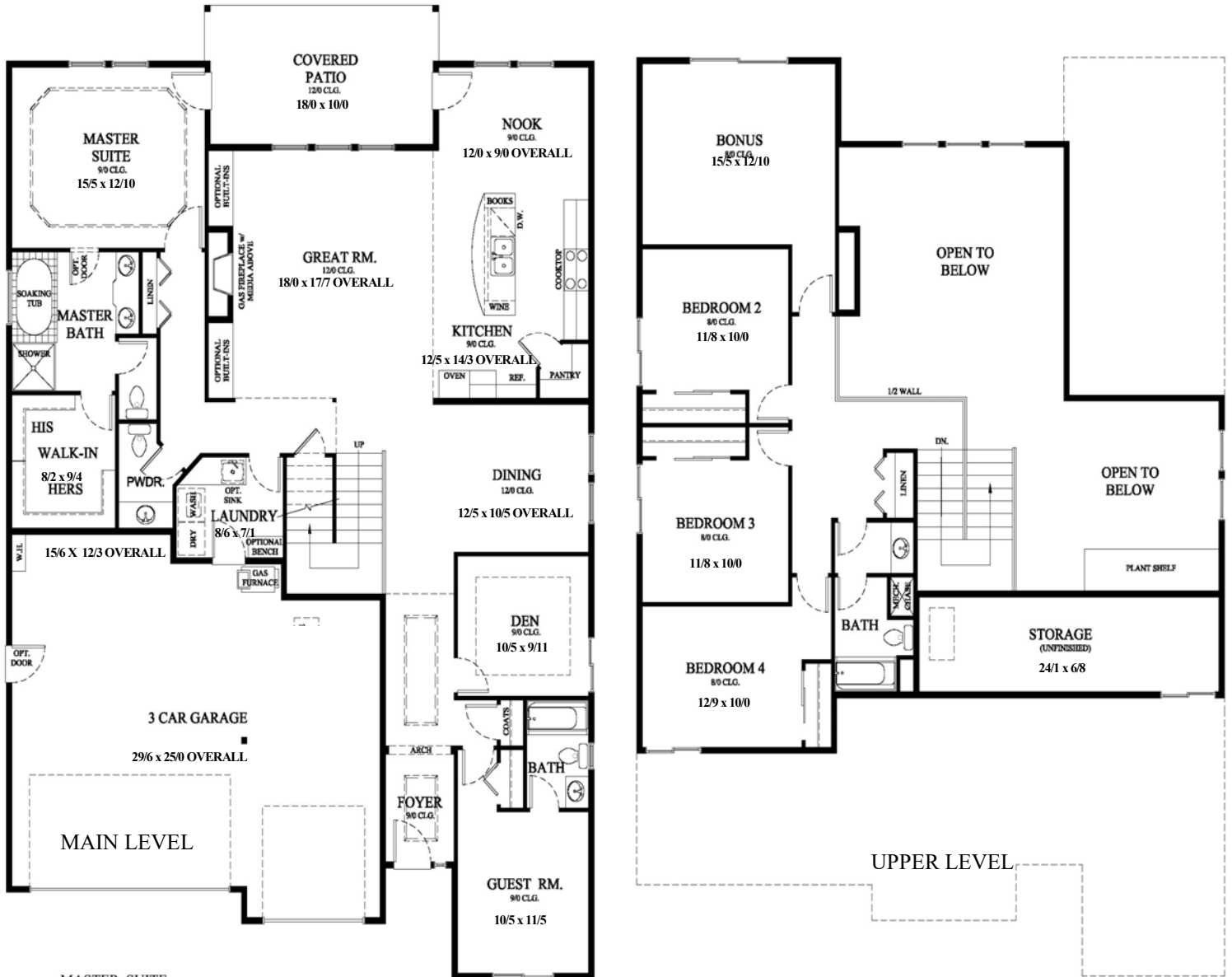


# PLEASANT HOLLOW

## CLASSIC COLLECTION



OPTIONAL SUMMERPLACE SHOWER

### EVERTON

Base Square Footage = 3040

# PLEASANT HOLLOW

CLASSIC COLLECTION

A wide open layout and sweeping views are the highlights of this exciting new master on the main plan. The spacious island kitchen serves as the center of family activity, while staying connected to both eating areas.



CRAFTSMAN

The luxurious master suite features walk out patio access. The main level also features a den and full guest suite, as well as a huge three car garage.



NORTHWEST TRADITIONAL

Upstairs, the view from the two story great room leads you to three additional bedrooms and a generously sized bonus space, adding flexibility to this breathtaking design.



RENAISSANCE REVIVAL

## EVERTON



Building a Climate of Excellence  
WA. LIC.# SUMMEH1050N5

In the spirit of continuous improvement, we reserve the right to make changes to plans, specifications and pricing without notice. Variations in interior and exterior configurations may occur because of normal design criteria and changing building codes. All square footages and room dimensions are approximate only. All illustrations, floor plans and maps are artist's conceptions only and are not intended to be exact depictions of actual site conditions.