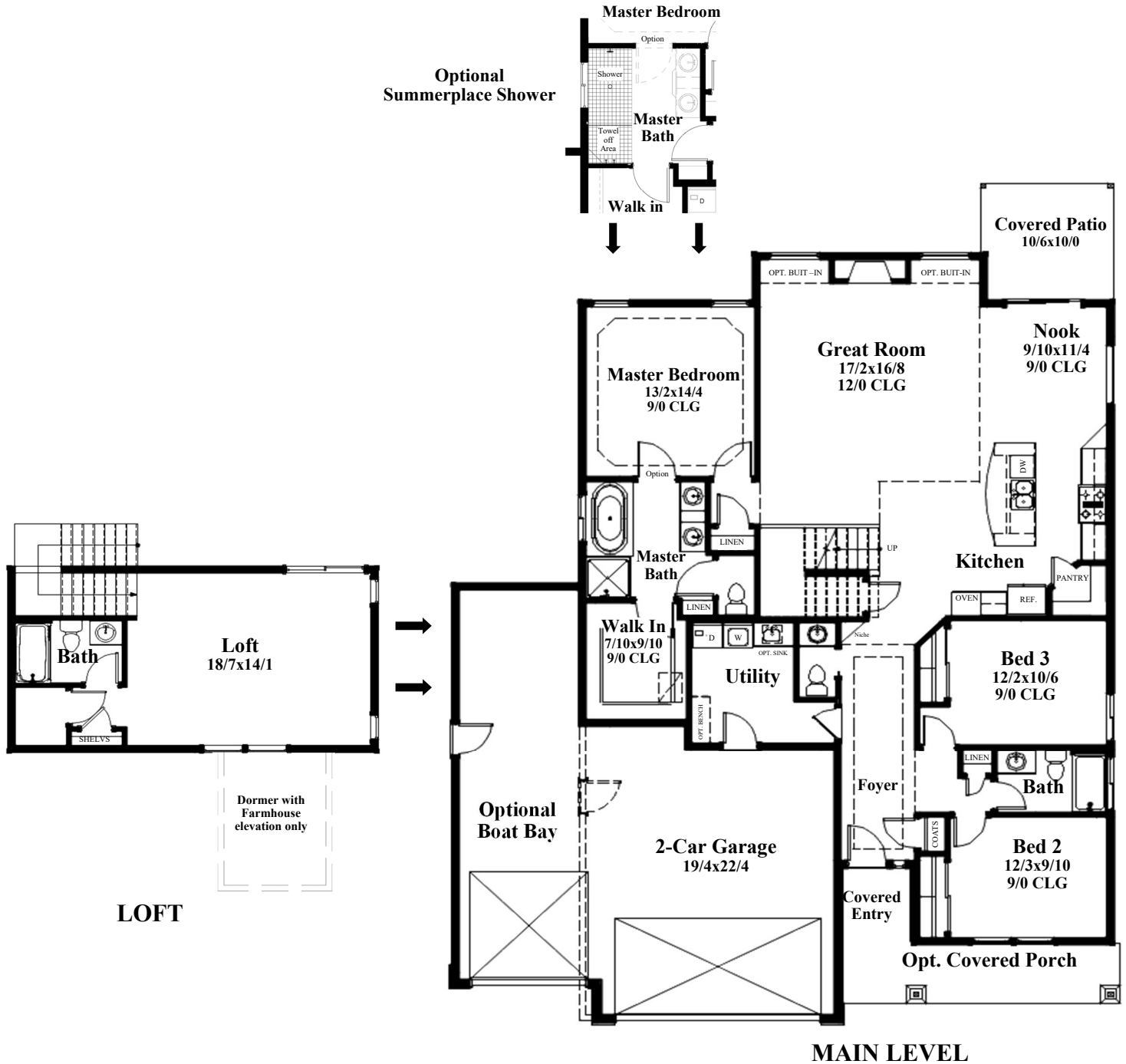


PLEASANT HOLLOW

CLASSIC COLLECTION



PIPER LOFT

Base Square Footage = 2365

PLEASANT HOLLOW CLASSIC COLLECTION

Take the *proven, classic design* of our one level Piper plan, add *second story functionality*, and you've got our *newest offering*, the Piper Loft. This *fresh spin* on our sought after three bedroom design adds *another layer of flexibility* that you're sure to enjoy.



NORTHWEST TRADITIONAL

Inside you'll find *12' ceilings in the great room* and an *impressive stone fireplace* adjacent to the *gourmet island kitchen*. The private, *main level master suite*, complete with *soaking tub*, provides sanctuary from daily activities.



PRAIRIE

The private, *main level master suite*, complete with *soaking tub*, provides sanctuary from daily activities. Upstairs, there is a *huge bonus loft* as well as a *convenient full bath* and *lots of storage space*. This plan also features a *spacious two car garage* and *optional boat bay*.



FARMHOUSE



PIPER LOFT



In the spirit of continuous improvement, we reserve the right to make changes to plans, specifications and pricing without notice. Variations in interior and exterior configurations may occur because of normal design criteria and changing building codes. All square footages and room dimensions are approximate only. All illustrations, floor plans and maps are artist's conceptions only and are not intended to be exact depictions of actual site conditions.