

Larkspur

Maya

This exciting new plan represents the cutting edge in **state of the art home design**, combined with all of the **luxury amenities** that today's home buyer's have come to expect. The view from the **oversized entry door** leads through to the **generously sized great room**, complete with a **soaring two story ceiling and stone fireplace**.

The **gourmet island kitchen**, decked out with **top end appliances**, features abundant space and an **oversized walk in pantry**. The **private master suite** comes with all of the **luxury appointments**, including a **free standing soaking bathtub**.

On the main level, you'll also find a **den/home office**, that also has an available **optional full guest bath**. Upstairs, this home features a **spacious flex room** and two additional bedrooms.



Northwest Traditional

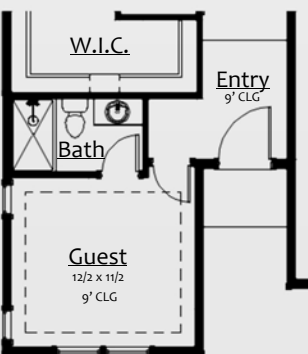


Modern

Larkspur



Main Floor Plan



Optional Guest Bath
73 S.F.

Standard Layout

2,699 S.F.

With Guest Bath

2,772 S.F.



NW Traditional Upper Floor Plan



Modern Upper Floor Plan