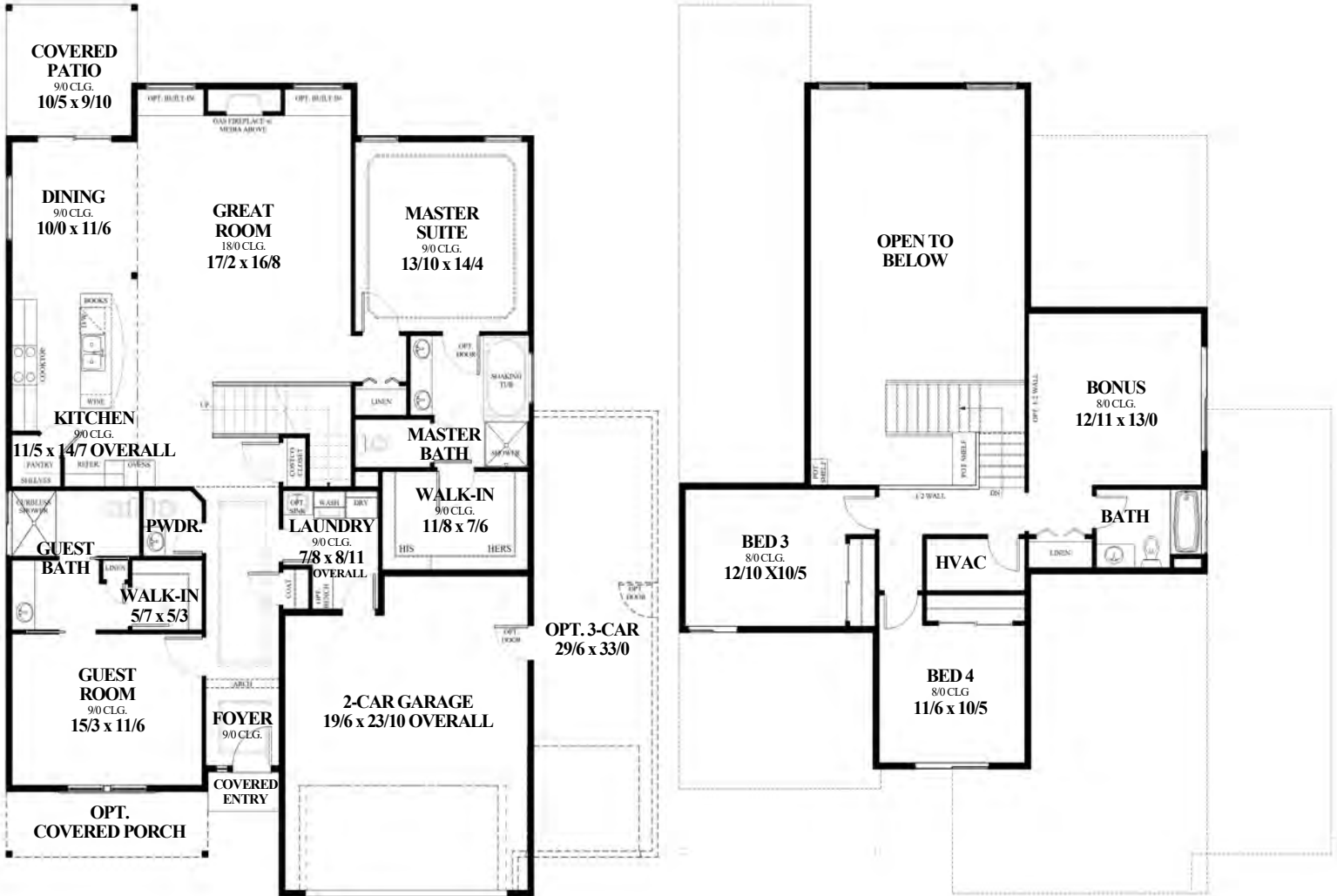


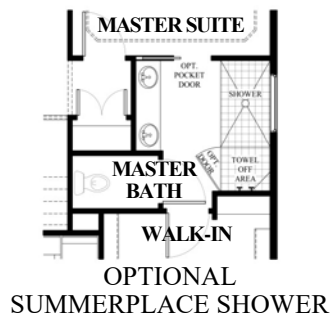
PLEASANT HOLLOW

CLASSIC COLLECTION



MAIN LEVEL

UPPER LEVEL



KENNEDY

Base Square Footage = 2627

PLEASANT HOLLOW

CLASSIC COLLECTION

This *fresh, new design* boasts all of the elements sought after in *multi-generational living*. The centerpiece of the main level features an *expansive great room with soaring ceilings and towering windows* to bring in natural light.



CRAFTSMAN



NORTHWEST TRADITIONAL

In addition to the *luxurious main level master suite*, there is also a *wheelchair accessible, fully appointed guest room, perfect for grandma.*

The second floor features two additional sleeping rooms and a *spacious bonus room*, offering a perfect hangout for the kids and their friends. An *optional boat bay* in the garage completes this *exciting new design.*



FARMHOUSE



KENNEDY

SUMMERPLACE HOMES, INC.

Building a Climate of Excellence

WA. LIC.# SUMMEH1050N5

In the spirit of continuous improvement, we reserve the right to make changes to plans, specifications and pricing without notice. Variations in interior and exterior configurations may occur because of normal design criteria and changing building codes. All square footages and room dimensions are approximate only. All illustrations, floor plans and maps are artist's conceptions only and are not intended to be exact depictions of actual site conditions.