



HIGHLAND TERRACE

#

#

RANCHSTYLE I

This **exciting new design** is packed with all of the **best features**, bundled into an **efficient floorplan** that you'll enjoy living in for years to come. The **heart of this home** features a great room connection to the centrally located **gourmet kitchen with a walk in pantry**, as well as access to the **covered patio** for your **outdoor living enjoyment**. The primary suite features **access to the covered patio as well**, and an option to add a soaking tub. Two secondary bedrooms and a spacious two car garage complete this functional design. There is also an **option for a three car garage**.



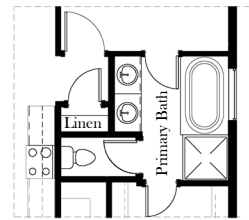
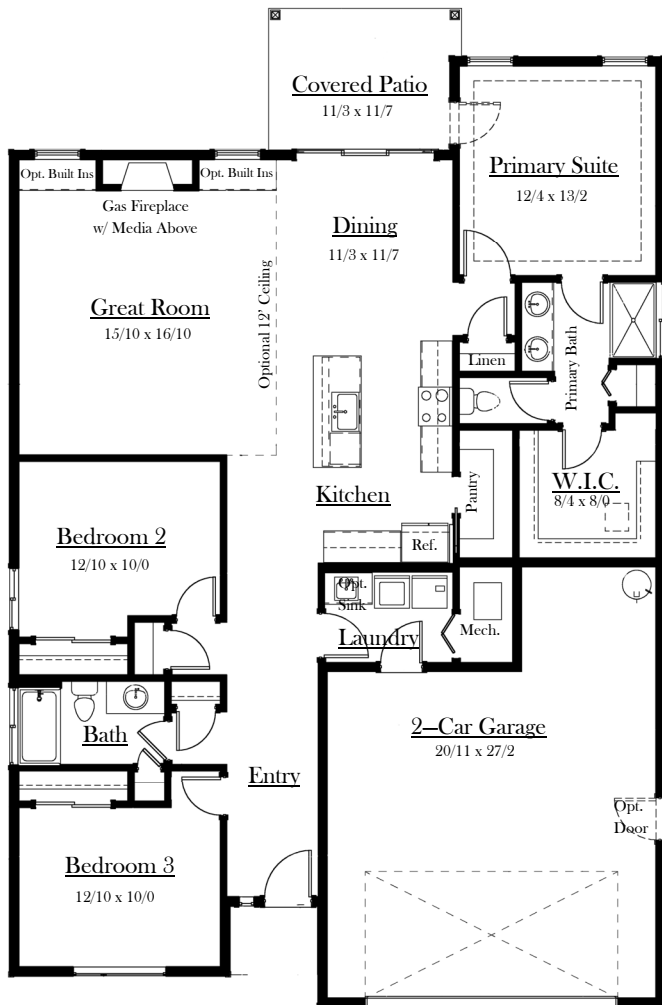
In the spirit of continuous improvement, we reserve the right to make changes to plans, specifications and pricing without notice. Variations in interior and exterior configurations may occur because of normal design criteria and changing building codes. All square footages and room dimensions are approximate only. All illustrations, floor plans and maps are artist's conceptions only and are not intended to be exact depictions of actual site conditions.



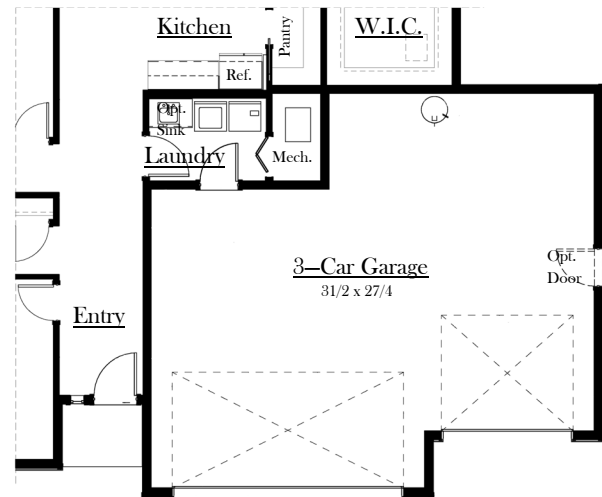
WA. LIC.# SUMMEH1050N5



HIGHLAND TERRACE



Opt. Tub



Opt. 3-Car

1,795 S.F.

In the spirit of continuous improvement, we reserve the right to make changes to plans, specifications and pricing without notice. Variations in interior and exterior configurations may occur because of normal design criteria and changing building codes. All square footages and room dimensions are approximate only. All illustrations, floor plans and maps are artist's conceptions only and are not intended to be exact depictions of actual site conditions.



WA. LIC.# SUMMEH1050N5