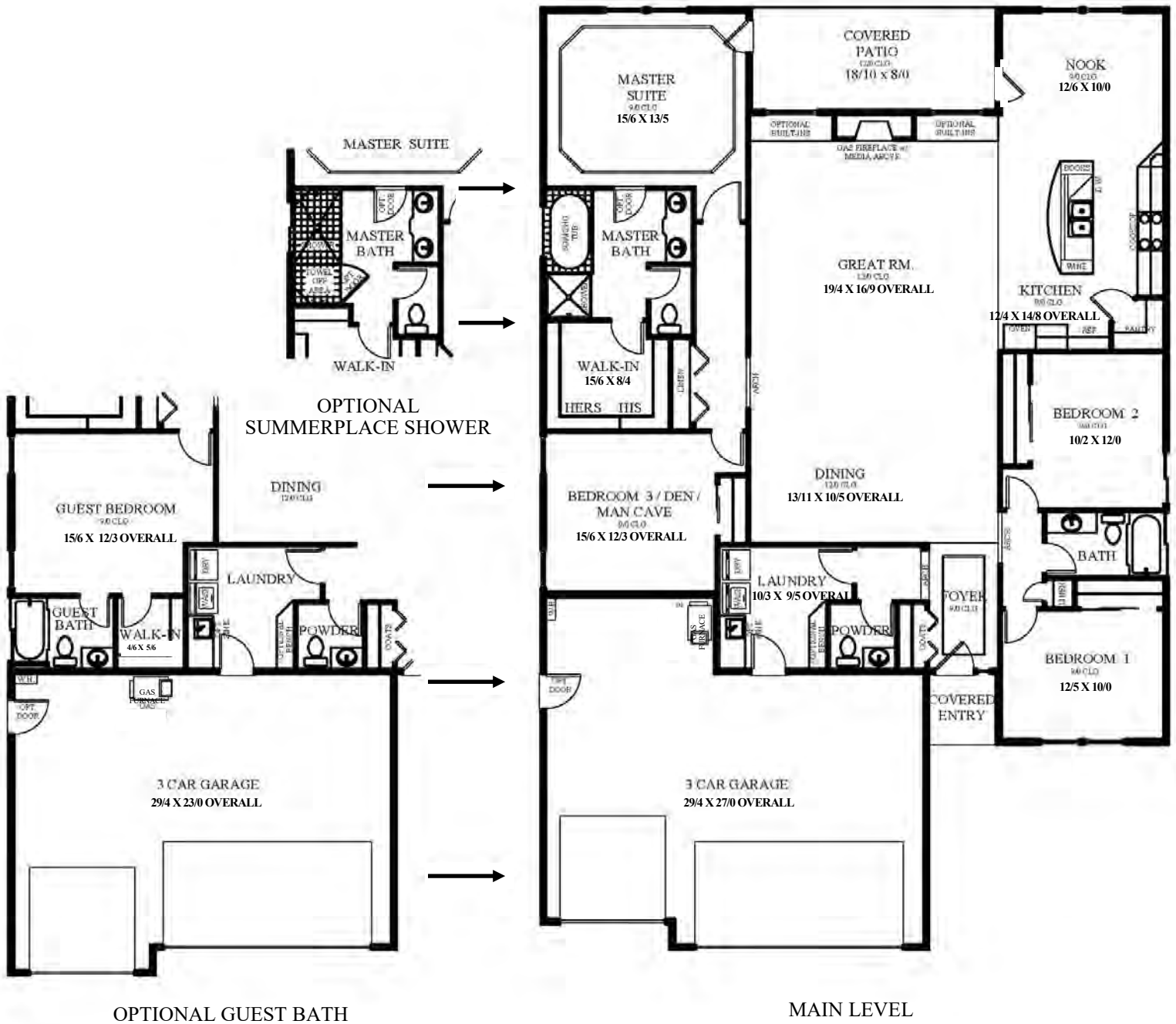


PLEASANT HOLLOW

CLASSIC COLLECTION



OPTIONAL GUEST BATH

MAIN LEVEL

TOWNSEND

Base Square Footage = 2388

PLEASANT HOLLOW

CLASSIC COLLECTION

This new relaxed ranch design takes the open great room concept to a whole new level. From the grand entry, you take in the expansive great room and formal dining area with 12' ceilings that are perfectly connected to the gourmet island kitchen and spacious breakfast nook.



CRAFTSMAN



NORTHWEST TRADITIONAL
(SHOWING GUEST BATH OPTION)

The roomy and well appointed master suite, with it's garden tub and huge walk in closet, also boasts access to the covered back patio. Three additional bedrooms and an option for a full guest bath add to the flexibility of this exciting design. A huge standard three car garage completes this new layout.



TOWNSEND



In the spirit of continuous improvement, we reserve the right to make changes to plans, specifications and pricing without notice. Variations in interior and exterior configurations may occur because of normal design criteria and changing building codes. All square footages and room dimensions are approximate only. All illustrations, floor plans and maps are artist's conceptions only and are not intended to be exact depictions of actual site conditions.