

Larkspur

Palisade

Designed specifically for Larkspur, the Palisade offers all of the features that today's luxury homebuyer is looking for. Wrapped up in a choice of front facades offering a three car garage with exciting curb appeal.

At the heart of this "master on the main" plan, you'll find a **huge great room with 14' ceilings and a dramatic stone fireplace.** The **large, functional island kitchen** with it's **gourmet appliances,** is perfect for preparing those special family meals.

The luxuriously appointed private master suite, featuring a free standing bathtub, shares unique connectivity to the main floor pass through laundry room.

For "Work at Home", there's a quiet **den/home office with an available optional guest bath.** The second floor features a **full guest suite, a giant flex room,** two additional bedrooms, and a convenient **upper laundry room.**



Northwest
Traditional



Modern

Larkspur

Standard Layout

3325 S.F.

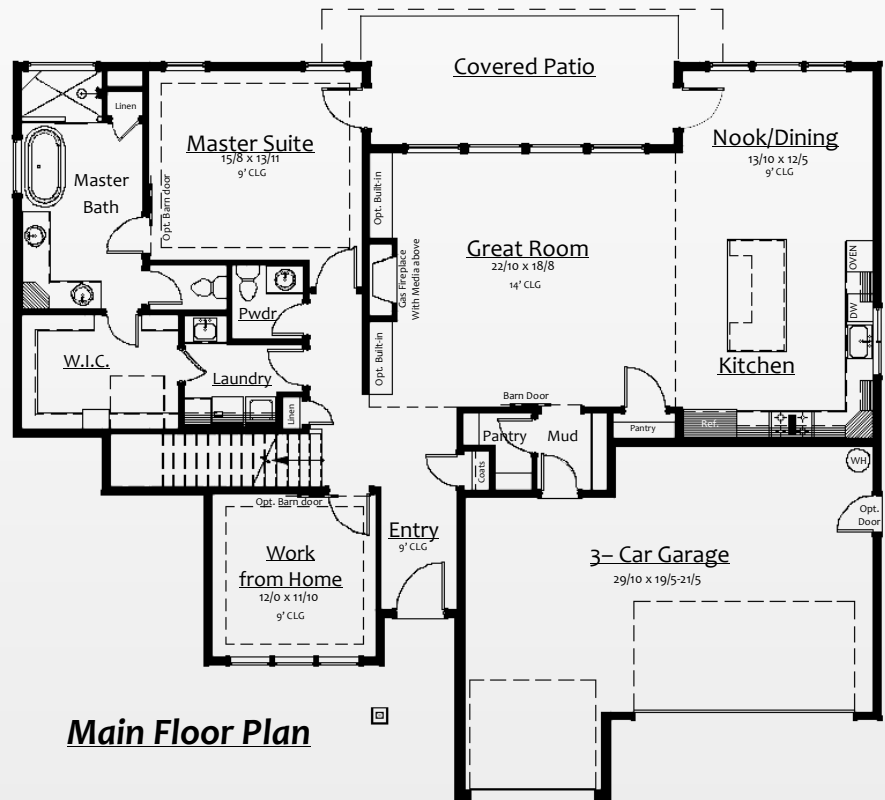
With Guest Bath

3393 S.F.



Optional Guest Bath

62 S.F.



Main Floor Plan



Upper Floor Plan



WA LIC# SUMMEH1050N5



In the spirit of continuous improvement, we reserve the right to make changes to plans, specifications and pricing without notice. Variations in interior and exterior configurations may occur because of normal design criteria and changing building codes. All square footages and room dimensions are approximate only. All illustrations, floor plans and maps are artist's conceptions only and are not intended to be exact depictions of actual site conditions.

1/28/21